

ESTD SINCE 1967

RUBY FORGINGS



*“When you have energy in mind, it shows in your steps .
Keeping this in focus, we, at RUBY FORGINGS,
move forward with energy in our ideas,
in our spirit and in our action.”*

**- MAANIK BABBAR
(PARTNER)**



RUBY FORGINGS

COMPANY BRIEF

FORGINGS.CO

Ruby forgings was incorporated in the year 1967. Since inception, the company has been driven by a sense of purpose and commitment to deliver unremitting value and quality to its customers.

We have been supplying finished open-die forgings (upto 5 tons , single piece) to original equipment manufactures.

Gear teeth cutting upto 12 meters and Gear finishing upto 10 meters . Shafts can be finish machined upto 4 meters. We have our own raw material , forging shop , machining shop . List of all machines are available on website and are also attached for your kind consideration.

We have excellent facility of LLOYD Certified testing lab from the stage of Raw material procurement up-to finished material.

Our Plant is situated at Lal Kuan, Ghaziabzd, which is easily assessable by Road, Rail and Air.

QUALITY ASSURANCE

- To aggressively develop, manufacture and market our products to domestic and foreign clients, achieving highest level of customer satisfaction.
- Consistently meeting or exceeding customer requirements.
- Time bound deliveries.
- Concentrating our resources on designing and building quality into our products and services.
- Continuously improving process controls in all areas of our business.
- Encouraging our suppliers to enhance input quality.
- Attracting, retaining and developing motivated quality performers.
- Compliance to the legal and regulatory requirements applicable to our products.



RUBY FORGINGS

TESTING FACILITES

List of Lab/Physical Lab equipments with details:
The following testing facilities are available in house.

- 1. Fully equipped wet laboratory for chemical analysis of the material**
- 2. Ultrasonic testing machine EEC DIGISCAN 322**
- 3. Magnetic Partical Inspection testing**
- 4. D.P testing kit**
- 5. Digital Hardness tester (Blue Star)**
- 6. Impact testing machine (Blue star)**
- 7. UTE machine 40 tonnes (Blue Star)**

We are fully equipped to provide satisfactory reports to our customer for all kinds of tensile strength, yield stress, elongation and shore hardness of the material.

The annealing/normalizing furnace helps us in the treatment of the material so as to provide material with actual standards and as per the customer's





RUBY FORGINGS

FORGING FACILITY

- Ø Hydraulic hammer Capacity 7 Ton & 5 Ton (1 Nos.)
- Ø Pre-heating Furnaces (2 Nos.)
- Ø Overhead Cranes (5 Nos.)
- Ø Manipulator 3 ton & 5 ton (1 Nos.)

MACHINERY SHOP

TYPE	COMPANY	CHUCK	QTY.
Vertical Lathe	STANKO	Ø 70 X 48	1 Nos.
Vertical Lathe	NILES	Φ 42 x 20	1 Nos.
Vertical Lathe	Webster Bennett Coventry England	Φ 48 x 20	1 Nos.
Vertical Lathe	Jungenthal (KE 21200)	Φ 40 x 20	1 Nos.
Horizontal Lathe	HEYLIGENSTAEDT & COMP. (G.M.B.H)	Φ 36 x 165	1 Nos.
Horizontal Lathe	Binns & Berry (Trident L.850)	Φ 30 x 248	1 Nos.
Horizontal Lathe	French make	Φ 20 x 162	1 Nos.
Horizontal Lathe	Top Engineers (punjab)	Φ 36 x 122	1 Nos.
Horizontal Lathe	Top Engineers (punjab)	Φ 36 x 122	1 Nos.
Horizontal Lathe	Top Engineers (punjab)	Φ 30 x 67	1 Nos.
Horizontal Lathe	Top Engineers (punjab)	Φ 36 x 122	1 Nos.
Horizontal Lathe	Top Engineers (punjab)	Φ 36 x 71	1 Nos.
Horizontal Lathe	Top Engineers (punjab)	Φ 36 x 83	1 Nos.
Horizontal Lathe	Top Engineers (punjab)	Φ 36 x 228	1 Nos.
Horizontal Lathe	Top Engineers (punjab)	Φ 36 x 120	1 Nos.
Horizontal Lathe	Top Engineers (punjab)	Φ 36 x 285	1 Nos.



HEAT TREATMENT SHOP

	Size	Purpose
Bogie hearth furnace with temperature Controller & Recorder	900 x 1500 x 4000mm	Normalizing, Heating & tempering
Oil quenching tank	1500 x 1500 x 3400	Quenching

NON DESTRUCTIVE TESTING SHOP

Model details of Ultrasonic Flow Detectors

A.	MICROSCAN PX-20 1MT (New Machine)
B.	MICROSCANPX 001 2MT
C.	ESM2MT (EEC Make)
D.	VIBROSONIC (FD-301)
E.	EECi New DIGISCAN DS 322



MPI MACHINE

RUBY FORGINGS

A	EEC I Flax EF -2Y
B	Mangnoflex± Y7
D.P TEST & Dye check (complete set)	

POWER ALTERNATE

- **Diesel Generators:- 3 nos.**

PRODUCTION FACILITY

The Company is capable of Forging and casting various grades of steels such as Stainless Steel, Tool Steel, Construction Steel, Alloy Steel, Low Carbon Steel, Medium Carbon Steel, High Carbon Steel and cast iron.

The names of some of the grades which consists of our product ranges are as under:- **AISI-4130, AISI-4140, AISI-4340, AISI-4145, F-60, AISI 403, AISI 410, AISI 416, AISI 430, AISI 304, AISI 308, 17CrNiMo6, 30CrNiMo8, 30CrNiMo6, 13CrMo44, 20MnCr5, 40Ni6Cr4Mo3, 42CrMo4, 40Cr4Mo2, AISI316, En 3, En 8, En 9, En 14, En 15, En 18, En 19, En 24, EN 25, EN 31, EN 351, IS 1875, IS1570, SAE 1015, SAE 1016, SAE 8620, SAE 1040 etc.**

Our company has the following infrastructure which assures our customers to get even intricate of forgings manufactured:

- A comprehensive process control program which ensures Total Quality Management.
- Capable of “Single Piece Forgings” up to 6000kgs.
- Quality & Precision machining facilities at our Machining Division.
- Our R & D has been actively concentrating on “Process Control System” upgrading.

7 METER
SHAFT

RUBY FORGINGS
www.forgings.co





Ruby
FORGINGS
WWW.FORGINGS.CO



Ruby forgings
WWW.FORGINGS.CO



3 tons & 4.5 meter

Ruby
FORGINGS
WWW.FORGINGS.CO



Ruby
forgings
www.forgings.co



Ruby
FORGINGS
WWW.FORGINGS.CO



Ruby forgings www.forgings.co



Ruby forgings
WWW.FORGINGS.CO



RUBY FORGINGS
WWW.FORGINGS.CO



Ruby Forgings



Ruby Forgings



RUBY FORGINGS

WWW.FORGINGS.CO



Ruby Forgings

www.forgings.co



RUBY FORGINGS

OUR PRODUCTS



PLAIN & STEPPED SHAFTS

Max. Diameter: \varnothing 80- \varnothing 600mm

Max. Length :7000mm



DISCS

Max. Thk : 50 – 800 mm

Diameter: \varnothing 100 - 1500mm



RINGS

Max. External Diameter: 2000mm

Min. Wall Thickness: 40mm

Max. Thickness: 450mm



FLATS

Max. Length:7000 mm

Max. Width: 500 mm

Max. Breath: 350mm



RUBY FORGINGS

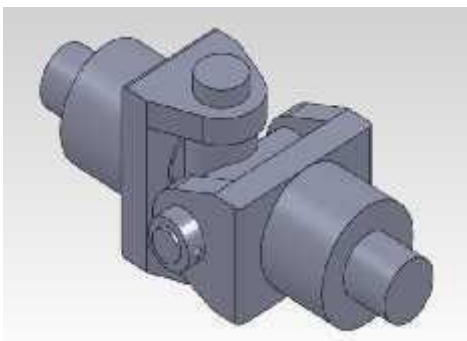
OUR PRODUCTS



CRANK SHAFTS



GEAR COUPLINGS



UNIVERSAL COUPLINGS



UNIVERSAL SPINDLES



RUBY FORGINGS

OUR PRODUCTS



FORGED ROLLS



INDUSTRIAL FLYWHEEL



RAILWAY WHEELS



RAILWAY AXLES



RUBY FORGINGS

INDUSTRIES WE SERVE

SUGAR & CEMENT PLANTS SHIP BUILDING

- i) Mill Roller Shafts
- ii) Mill House Pin
- iii) Dumbel
- iv) Pinion Shafts, Gear Shafts
- v) Worm Shafts
- vi) Intermediate Shafts
- vii) Transmission Shafts
- viii) Tail Bar, Gear Rings & Blanks
- ix) Shredder Shafts
- x) Cane Cutter Shafts
- xi) Fibrizor Shafts,

IRON AND STEEL PLANTS POWER PRESS

- i) Roughing Rolls
- ii) Grooved Rolls
- iii) Hot Rolling Rolls
- iv) Cold Rolling Rolls
- v) Hammer Types
- vi) Die Blocks
- vii) Press Moulds
- viii) Press Columns
- ix) Universal Joint Spindles
- x) Universal – Joint Sockets Wobblers Rollers
- xii) Conveyor Rolls
- xiii) Idler Shafts, Drive Shaft
- xiv) Withdrawal Rolls

EXTRUSION TOOLS

- i) Anical Engineering Intermediate
- ii) Internal Liners
- iii) Stem Dies





RUBY FORGINGS

MATERIAL HANDLING/CRANES DRILLING EQUIPMENTS

- i) Tie – Rods
- ii) Spreaders
- iii) Excavator Axles

UTILITIES SECTOR

- iv) Conveyor Rolls v) Hubs
- vi) Wheel and Gear Shafts

MECHANICAL ENGINEERING GEAR BOX MANUFACTURES

- i) Plain and Eccentric Shafts
- ii) Axles
- iii) Spindles
- iv) Control Shafts
- v) Piston Rods
- vi) Disks

AUTOMOBILE ENGINEERING

- i) Crank Shaft
- ii) Connecting Rod
- iii) Impellor Shafts & Other items

RAILWAY

- i) Pinions
- ii) Armature Shafts
- iii) Crank Shafts

DIE FORGING UNITS

- i) Sow Blocks
- ii) Die Blocks-Din 2714,DBH-11,H
- iii) Injector Shafts
- iv) Screws
- v) Cranks
- vi) Wedges etc.,



SPONGE IRON PLANTS

- i. Roller Shafts
- ii. Idler shafts
- iii. Pinion Shafts & Other Forging
- iv. Rounds
- v. Axles
- vi. Bull Gears
- vii. Coolers & kiln rolls etc.

An ISO 9001 Company

FORGINGS

IN CARBON AND ALLOY STEEL

FROM 5kgs to 5,000kgs

Plain and Stepped Shaft

Dia : 80 - 600 mm
Max Length : 7000 mm

Gear Pinon/Wheels

Dia : 100 - 1500 mm
Thk: 50 - 800 mm

Flats/Blocks

Max Length : 7000 mm
Max Width : 500 mm
Max Breadth : 350 mm

Rings

Max External Dia : 2000 mm
Min Wall Thickness : 40 mm
Max Thickness : 450 mm

Our Products

- Crank Shafts • Gear Couplings
- Universal couplings and spindles
- Forged Rolls • Industrial Flywheels
- Railway Wheels and Axels
- Pinion and Gear Shafts
- Roughing Rolls
- Crane Wheels • Conveyor Rolls

Industries We serve

- Sugar and Cement Plants
- Iron and Steel Plants
- Material Handling/Cranes
- Gear Box manufacturers
- Railways Industries
- Rolling Mill manufacturer

Names of some of the grades we manufacturer:

AISI-4130/4140/4340, 17crnimo6, 30crnimo8, 20mncr5,
40ni6cr4mo3, 42crmo4, En-8/9/19/24/353, SAE 8620/1040,
C-35/40/45/50/55/60 etc.

Capacity: - Max 5 Tons Single Piece



RUBY FORGINGS

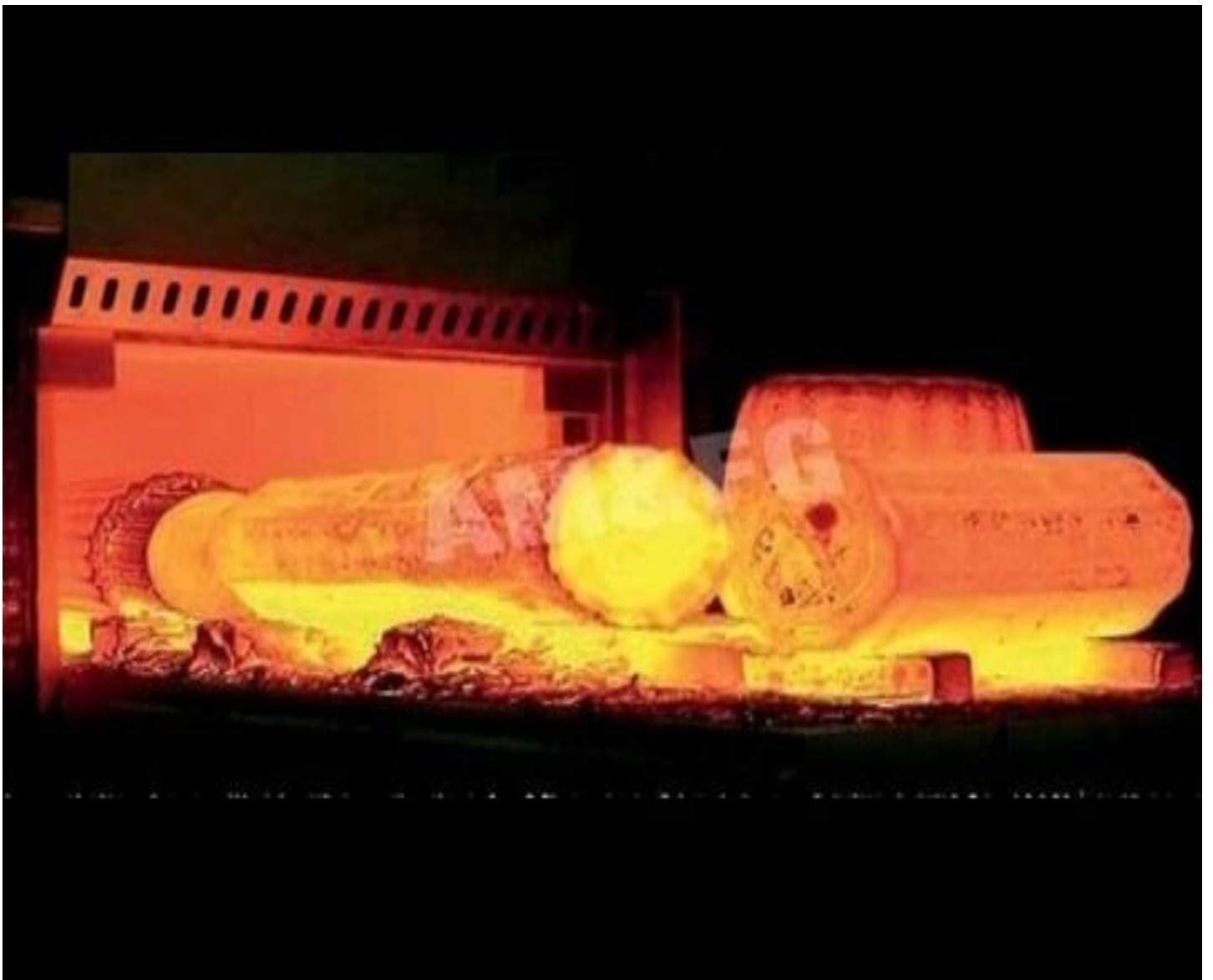
B-30, Bulandshahar Road,
Ghaziabad-201009 (U.P.) INDIA
Tel : (0120) 2866814, 15, 16, 18, 19
Fax : (0120) 2866815
Website: www.rubyforgings.co



R.P. INDUSTRIES

Near Lal Kuan, G.T. Road
Ghaziabad-201009 (U.P.) INDIA
Tel : (0120) 2866814, 15, 16, 18, 19
Fax : (0120) 2866815
Website: www.forgings.co

PARTNER MANIK BABBAR MOB : +91 98108 45108



THANKYOU

www.forgings.co

